

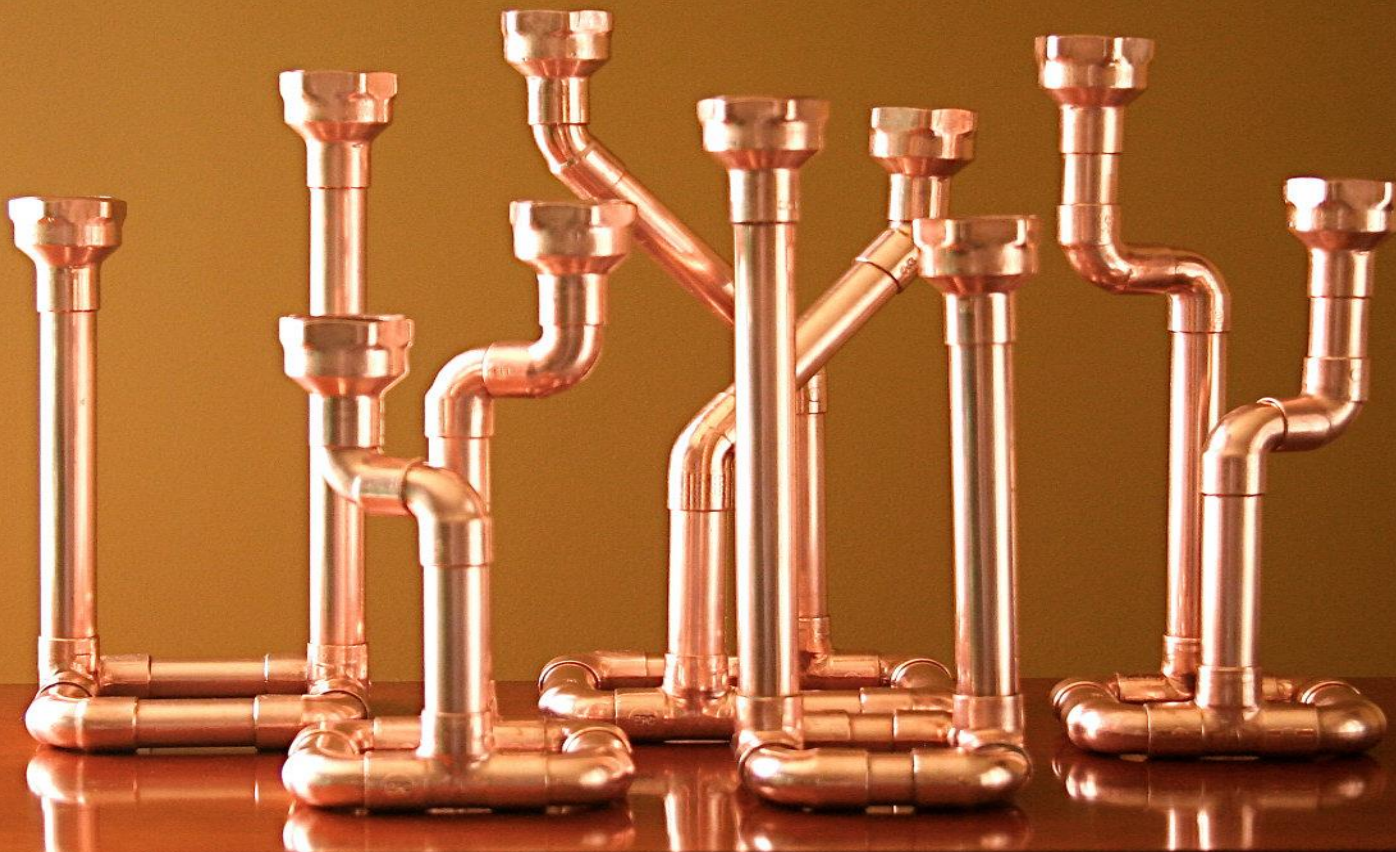


P.K.G. Exports Pvt. Ltd.



Adler Steel Limited

COPPER SEAMLESS TUBES





P.K.G. Exports Pvt. Ltd.



Adler Steel Limited

We are pleased to introduce ourselves as Indian associates of Adler Steel Limited, Canada, export agency for a Copper Seamless Pipe producer in China. Our principals offer cost effective solutions to clients in India. PKG operates from the suppliers mandate whilst upfront addressing critical issues of logistics, financing and prime material sourcing of Copper Seamless Tubes.





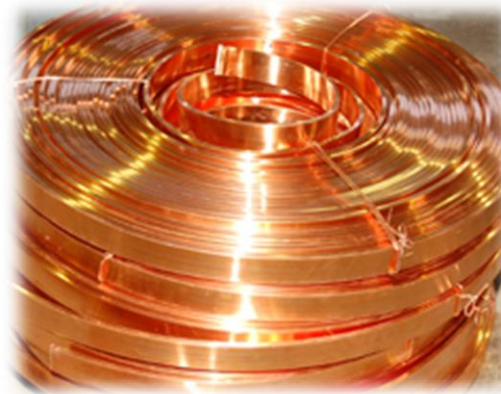
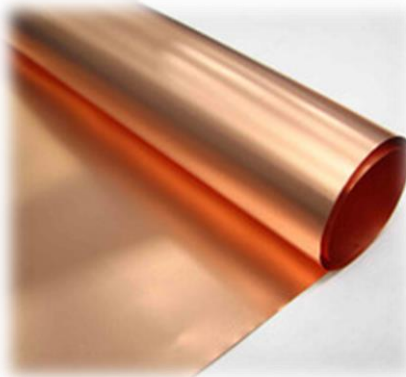
The special feature of the mill's production program is Copper Seamless Pipes of higher (up to 12") diameters, which most mills worldwide, including in India, lack. Leading Indian consumers such as Blue Star, Bhilai Steel Plant, Tata Steel have used our products satisfactorily.

Material is produced as per the Chinese standards and their equivalent in ASTM, EN, GB grades. The mill is very capable with testing facilities. We have their full support not only in India but even elsewhere in the world. We would be pleased to send you the detailed specification against your project requirements.



RANGE OF COPPER PRODUCTS

**Copper and
Copper Alloys
Sheets and
Plates**



Copper Strips

**Copper and
Copper Alloys
Tubes and
Pipes**



**Copper and
Copper
Alloy Rods
and Bars**



COPPER AND COPPER ALLOYS TUBES AND PIPES SPECIFICATIONS:

Copper Tubes and Pipes	Alloy No.	Product	Temper	Dimensions (mm)		Length (mm)
				OD.	WT.	
	C10200 C12000 C12200 C11000	Extruded tubes	Ext.	50 ~ 300	5 ~ 65	300 ~ 6000
		Drawn tubes & Pipes	Soft, Hard	5 ~ 330	0.5 ~ 17.5	When OD. ≤ 100mm, L ≤ 7000mm
			H/2	5 ~ 100	0.5 ~ 15	When OD. ≥ 100mm, L ≤ 6000

High Copper Tubes	Alloy No.	Product	Temper	Dimensions (mm)		Length (mm)
				OD.	WT.	
	C18200	Extruded tubes	Extr.	100 ~ 220	17.5 ~ 37.5	500 ~ 3000

Copper Nickel tubes and Pipes	Alloy No.	Product	Temper	Dimensions (mm)		Length (mm), max.
				OD.	WT.	
	C71500	Extruded tubes	Extruded	80-120	10 ~ 25	300-3000
	C70600 C7060X		Extruded	70 ~ 250	10 ~ 25	300 ~ 3000
	C70600 C7060X	Drawn	M	8 ~ 194	1.0 ~ 3.5	1000 ~ 6000
				> 194 ~ 325	3.0 ~ 5.5	
	C71500		M Y2	8 ~ 80	0.8 ~ 8	500-7000
	C70600 C7060X	Condenser and Heat Transformer tubes and Pipes	M	6 ~ 160	0.5 ~ 4.5	500 ~ 6000
			Y Y2	6 ~ 76	0.5 ~ 4.5	15000
	C71500		M Y2	8 ~ 76	0.8 ~ 4.5	15000
	C70600 C7060X		M Y2	6 ~ 19	0.45 ~ 1.25	70 ~ 130Kg(coils)



COPPER STRIPS SPECIFICATIONS

	Alloy No.	Products	Temper	Dimensions (mm)	
				Thickness	Width, max.
Copper Strips	C10100 C10200 C11000	Copper Strips	Hard	0.05 ~ 0.12	300
				0.12 ~ 0.15	600
			Y、Y2、Y4、M	0.15 ~ < 0.50	600
				0.5 ~ 3.0	1000
	C10500	Strips of Oxygen free with Ag	Hard	0.40 ~ 3.50	600
	C10700		Soft	4	640
	TAq0.1	Strips of Tough Pich with Ag	H/2	0.15 ~ 2.5	300
	C10200 C11000	Strips for RF Cable	Soft, H/8、H/4	0.10 ~ 0.70	20 ~ 305
	C10200 C11000	Strips for Trasformer	Soft	0.1 ~ 0.12	300
				0.12 ~ 0.50	600
				0.5 ~ 2.5	1000
	C11000	Strips for compositing	Soft	0.3 ~ 0.5	600
			Extra Soft	0.5-1.0	1040
	C11000	Strips for waterstop	Soft	0.8-2.0	1000
	C11000 (C27400, C26800)	Strips for decorating	Hard, H/2,Soft	0.5-2.5	600 ~ 1000
	LP1100	Strips for photovoltaic	Hard, Soft	0.1 min.	



High Copper Composition	Alloy No.	Products	Temper	Dimensions (mm)	
				Thickness	Widths
	C19210	Lead Frame strips	Soft, H/4, H/2, Hard, Extra Hard	0.10 ~ 2.0	18 ~ 600
	C19400				
	C19210	Step Strips	H/2	0.38/1.27	40/66
				0.38/1.27	40/68
				0.6/1.5	56/92
				0.6/2.0	59/97
				0.6/1.6	53/104

Copper-Nickel Strips	Alloy No.	Products	Temper	Dimensions (mm)	
				Thickness	Width
	C7025	Strips for Lead Frame	Soft, Hard	0.1 ~ 1.2	20 ~ 600



COPPER AND COPPER ALLOYS BARS AND RODS SPECIFICATIONS

Copper Rods and Bars	Alloy No.	Product	Temper	Diameters (mm)	Length (mm),
	C10200 C11000 C12200	Extruded Bars & Rod	Extruded	16 ~ 300	

Hi-Copper Rods and Bars	Alloy No.	Product	Temper	Diameters (mm)	Length (mm),
	QCr0.5	Extruded Bars & Rod	Extruded	16 ~ 160	
	QCr0.5	Drawn	Hard, Soft	12 ~ 40	500 ~ 5000
	C18200	Drawn	Hard	12 ~ 70	3658

Copper-Nickel Rods	Alloy No.	Product	Temper	Diameters (mm)	Length (mm),
	C70600 C71500	Extruded Rod & Bars	Extruded	50 ~ 120	when Dia. is 50-75mm, Length:500 ~ 5000 when dia. is more than 75mm, Length : 500 ~ 4000.
	C70600 C71500	Drawn Rods & Bars	Soft Half Hard	25 ~ 50	500 ~ 5000



COPPER AND COPPER ALLOY SHEETS AND PLATES

Alloy	Alloy No.	Products	Temper	Dimensions (mm)		
				Thickness	Width	Length, max.
Copper Sheets and Plates	C11000, C10200,	Hot rolled plates	Hot Rolled	4 ~ 8	600 ~ 2000	5000
				> 8 ~ 60	600 ~ 3000	6000
				> 60 ~ 150	600 ~ 2500	5000
		Cold rolled Sheets and Plate	Soft, H/4, H/2, Hard.	> 0.5 ~ 3.0	≤1000	2500
				> 3.0 ~ 12	≤3000	6000
	C11000	Sheet for Armour piercing	Soft Hard	> 0.5 ~ 3.0	≤650	600 ~ 1600
				> 3.0 ~ 10	≤650	
	Oxygen free with Ag Tough Pitch with Ag	Silver Copper Sheet and Plate with hot-rolled	Hot rolled	4 ~ 8	600 ~ 2000	1000 ~ 5000
				> 8 ~ 60	600 ~ 3000	1000 ~ 6000
				> 60 ~ 150	600 ~ 2500	1000 ~ 4000
	C10200 C11000	Copper Stave for blast furnace	Hot-rolled	75 ~ 150	770 ~ 1590	1400 ~ 3600

Alloy	Alloy No.	Products	Temper	Dimensions (mm)		
				Thickness	Width, max	Length, max.
Cu Nickle	C70600	Copper Nickel sheets and Plates	Hot rolled	7 ~ 75	2000	4000
	C71500 C7060X		Soft, Hard	3 ~ 10	600	1500